

We're Hiring!

Preschool Teachers ECDEC program

BENEFITS

The CENTER offers generous benefits including health, dental, life & disability insurance.

We offer a generous pension program through TIAA CREF & paid sick days/holidays

REQUIREMENTS

Professional Educator License (PEL) with Early Childhood Endorsement

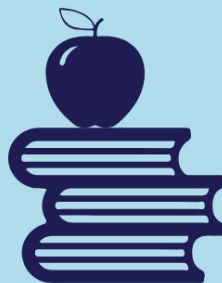
ESL and/or bilingual endorsement or coursework preferred

ECSE endorsement or coursework preferred

COMPENSATION

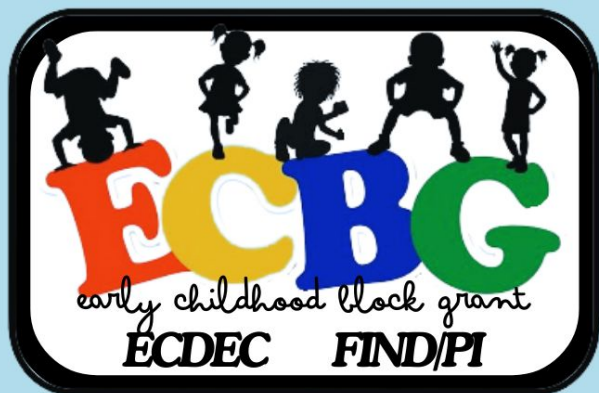
Competitive salary commensurate with CCSD15 salary schedule

join our team!



email us your resume today!

ecdecjobs@ecdec.org



We're Hiring!

WHY SUB?

Gives you the flexibility to work when and where you like.

Enjoy getting to know our wonderful students and staff throughout the program.

Choose a schedule that works for you!

join our team!



CLASSROOM SUBS

teachers and paras

REQUIREMENTS

PEL or sub license through ISBE

Educator license with stipulations for Paraprofessional-ELS (Para)

**ECDEC can work with you on getting these credentials

COMPENSATION

Teachers \$150/day
Instruction Assistants \$105/day

email us your resume today!

ecdecjobs@ecdec.org



THE CENTER

